

ADHOC Report Writer Enhancements

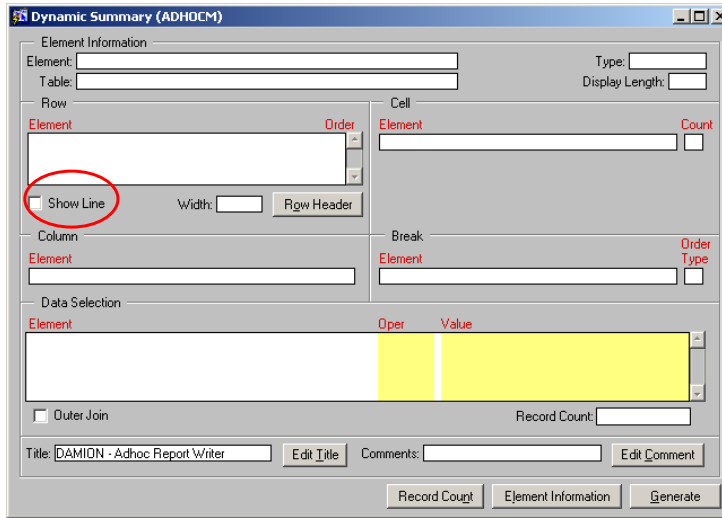
Report Generation Window

- ADHOC will allow the user to configure the page layout (font, font size, margins and orientation) of the report and save these settings with the ADHOC program.
- Users will be able to generate reports directly in MS Excel

The screenshot shows a window titled "Report Generation (ADDORP)" with a close button (X) in the top right corner. The window is divided into several sections:

- Dynamic Layout**: A header section for the configuration options.
- Report Setup**: A section containing:
 - Layout**: Fields for "Records:" (empty), "Width:" (11), "Lines/Page:" (54), and "Title Page:" (checkbox, unchecked).
 - Margin**: Fields for "Top:" (0.5), "Right:" (0.5), "Bottom:" (0.5), and "Left:" (0.5).
 - Orientation**: Radio buttons for "Portrait" (selected) and "Landscape".
 - Font**: A dropdown menu for "Name:" (Courier New) and a field for "Size:" (8).
 - Open with Excel**: A checkbox (unchecked).
- Status**: A large empty text area at the bottom of the configuration section.
- Buttons**: Three buttons at the bottom: "Save As...", "Save", and "Generate".

Indicator Show line for Dynamic Summary



- The Show Line indicator will allow the user to insert a line between the rows of the summary.

05/11/2007 08:59 SHIELD - RMS Page: 1
Summary By: CAD Type - Agency

CAD Type	DPD	HPD	S0	UMD	Total
ALRMH		1	-	-	1
ALRMS		46	10	16	74
AMBITE		-	-	1	1
ANIMAL		25	7	24	56
AOA		31	-	9	41
ASLT		10	1	7	18
ASTINV		16	-	2	18
ATL		54	5	18	77
ATTFU		32	1	26	59
BURG		18	2	5	25
BURGP		1	-	-	1
CB		34	1	36	71
CHILD		6	1	4	11
CIVIL		2	-	21	23
CKHAZ		12	-	8	20

05/11/2007 08:59 SHIELD - RMS Page: 1
Summary By: CAD Type - Agency

CAD Type	DPD	HPD	S0	UMD	Total
ALRMH		1	-	-	1
ALRMS		46	10	16	74
AMBITE		-	-	1	1
ANIMAL		25	7	24	56
AOA		31	-	9	41
ASLT		10	1	7	18
ASTINV		16	-	2	18
ATL		54	5	18	77
ATTFU		32	1	26	59
BURG		18	2	5	25
BURGP		1	-	-	1
CB		34	1	36	71
CHILD		6	1	4	11
CIVIL		2	-	21	23
CKHAZ		12	-	8	20